



Oxbridge Lane Primary School



Welcome to Reception

Welcome to Reception!

At Oxbridge Lane, we offer our children a **RAINBOW** experience:

Respect
Achieving
Including
Nurturing
Belonging
Opportunity
Welcoming

Our purposeful, nurturing environment allows our children to feel happy, enthusiastic and confident so that they can develop high self-esteem and self-worth. The stimulating environments promote a rich and broad play-based learning curriculum. Children have a wealth of opportunities to find and explore the environment and areas around them to develop and enhance their learning and ideas.

Our children feel valued as individuals and as part of our school community. Children respect and value themselves, others, the community and their environments. They feel a sense of belonging and feel safe. Pupils are independent learners, curious, resilient and eager to have a go.

We establish effective, supportive and long-standing relationships with pupils, peers, staff, families and our local community. Children begin to develop a moral compass and begin to make the right choices.

We inspire our children to be happy, making them happy learners and allowing them to be the best that they can be. We have high aspirations and expectations for everyone.



Learning to Read



In Reception, reading is taught through singing nursery rhymes, playing games, chatting and telling stories as well as formal phonics lessons. These activities help your child get ready for reading as they help them to hear different sounds, understand what a story is, join in with phrases and increase their vocabulary. They will begin to make links between basic sounds and the letters.

It is important that you read and share a variety of texts with your child, including fiction and non-fiction books, magazines, recipes, comics, shopping lists and much more.



In school, we follow the Jolly Phonics scheme. To learn more about the scheme, please use this link:

<https://www.jollylearning.co.uk/>

Mathematics



In Reception, we know that children are naturally curious about maths when exploring the world around them and it plays a huge part of their everyday lives. In school, to ensure that each child reaches their full potential in maths, we follow the White Rose Maths scheme.

Our wonderful, continuous provision gives children the opportunity to develop lots of skills such as: problem solving, spatial awareness and understanding of patterns. You can support your child at home through discussions and playing games.

Useful Websites

Phonics games:

<https://www.phonicsplay.co.uk/>



Top Marks:

Reception Curriculum

Throughout Reception, we will be following the Early Years Foundation Stage (EYFS) Framework. The areas of learning throughout Reception include 7 areas:

Communication and Language
Personal, Social and Emotional Development
Physical Development
Literacy
Mathematics
Understanding the World
Expressive Art and Design

Our curriculum throughout Reception is built upon the needs and interests of the children. Our long term plan for Reception can be found on the school website.

For additional information, please see:

<https://www.gov.uk/government/publications/early-years-foundation-stage-framework--2>

<https://birthto5matters.org.uk/>



Topics Covered

Throughout the year, we will cover these themes each term:

Autumn 1 - This is Me
Autumn 2 - Toy Story
Spring 1 - Fairy Tales
Spring 2 - Creepy Crawlies
Summer 1 - Superheroes
Summer 2 - Dinosaurs



Classrooms and Areas

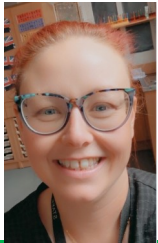


Look at our fantastic classroom and outdoor space!

We try and make it as exciting as possible giving you lots of time to explore our topics in the environment. Our classroom is filled with the magic and wonder of learning. Every day is a day filled with endless promise and another key to unlock your potential and imagination. Learning in Reception is all about you! Together we are one team and all of you are the biggest part. Our classroom will grow around our learning, which means we always need your help!

Staff in Reception

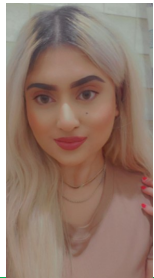
The staff in Reception are very excited to meet you!



Mrs. Franklin

My name is Mrs Franklin and I will be your class teacher in Reception. I am very excited to be teaching you next year and I can't wait to meet you all. We are going to have so much fun learning all about one another. I am looking forward to sharing stories and having lots of fun in our different areas, learning new skills. Our first topic will be all about you and I look forward to learning all about how wonderful you are.

See you soon.
Mrs Franklin



Miss Khan

Hello everyone, my name is Miss Khan and I will be teaching in Reception next year. I am really looking forward to all of the exciting new learning we will be doing and I can't wait to make lots of amazing memories with you all in our wonderful classroom. In our Reception class we will start our learning with the topic all about you where we can learn lots of interesting new things about each other. I am very excited to be teaching you all next year and I can't wait to see you all soon.

Miss Khan



Mrs Jobling

My name is Mrs Jobling and I am an Early Years Teaching Assistant. I am really looking forward to meeting and getting to know you. We will have such fun in Reception & I'm particularly looking forward to developing and exploring our outdoor provision with you.

See you soon.

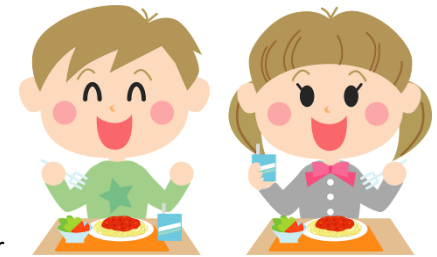


Mrs Mitson

Hello everyone, my name is Mrs Mitson, I am really looking forward to seeing you all in September. I love reading and my favourite story is The Tiger who came to Tea, we can share it together in the home corner and some of your favourites too. See you soon.

Lunchtime

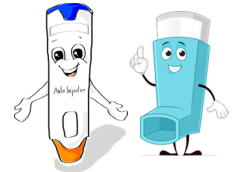
Lunchtime is a very sociable time. At Oxbridge Lane, children sit in the dining hall to eat lunch alongside their friends. We encourage the children to try all the food. The menu will be made available on our website.



Food menus cater for vegetarians, medical dietary needs and allergies. We are also very happy to work with you and your child to make sure that they are able to eat the food on offer. We know that some children can be fussy, but we are committed to working with you to help your child enjoy a wider range of foods. The children drink water with their food.

Medicines

Asthma inhalers, epi-pens and other prescribed medication will be administered in school where necessary.



Please ask the School Office for the relevant permission form.

Google Classroom

Throughout the year, we will be setting homework and activities for your child to do on Google Classroom.



Should we need to continue with any home based remote learning, we will use this platform.

Accounts will be set up and shared with children and parents in the Autumn Term.

Keeping in Touch with You

SchoolComms

All letters and information that you receive from school are sent to you electronically via SchoolComms. We do need you to provide us with your email address so that we can use this system. If this is not a suitable method, we can send paper copies.

PLEASE make sure that you have signed and returned the SchoolComms permission form.

Website: www.oxbridgelane.org.uk

This is a very useful place to look for information. In emergencies, such as snowy weather, which may cause us to close the school, the website will keep you up to date. All letters sent by SchoolComms are also available to view on the website.

Newsletter

These are published regularly. This is how we keep you up to date on what is happening in school.

Oxbridge Lane Parent Teacher Association (PTA)

We are hoping to draw together friends of Oxbridge past and present. If you have ideas that could make this association grow, please get in touch and join in.

School telephone number: 01642 607421

School email address: oxbridgelane@sbcschools.org.uk



School Uniform

Our uniform is important to us as it shows we are proud to be part of the Oxbridge family.

Our uniform is:

A green sweatshirt / cardigan
White polo shirt
Black or grey trousers / skirt
Sensible shoes
Book bag



For summer

Green gingham dresses
Black or grey shorts

For safety reasons please keep all jewellery at home.

PE Uniform

Children take part in 2 hours of PE each week. They should come to school wearing their PE clothes and will remain in them throughout the day.

PE Day in Reception is: **Friday**

Our PE kit is:

White t-shirt
Black shorts / jogging bottoms / leggings
Black jumper / hoody or school jumper.
Plimsolls or trainers



With 60 five year olds in one space, you will understand our reasons for asking you to **PLEASE LABEL** all clothing clearly.

Uniform with our logo embroidered on can be ordered from [Elizabeth's Embroidery](#) if you wish to do so.

School Rules

At Oxbridge Lane Primary School we have 3 school rules that are followed throughout school. They are:

- Be ready**
- Be respectful**
- Be safe**

These simple rules are easy to follow and we encourage pupils to

Getting your child ready for Reception

Here are some tips on how to prepare your child for their Reception experience:

- Have fun sharing books together as much as possible.
- Sing and learn nursery rhymes and other rhymes.
- Encourage them to communicate so that they can make their needs known to us.
- Encourage them to dress and undress themselves.

Settling in

This is a very important time for your child and it may take a few days or even weeks to get used to all of the new faces and the school.

In Reception, we are trying to build independent skills and on a morning, we get into the routine of hanging our coats up, matching our names to their picture and sitting on the carpet. We would encourage adults to leave their child at the gate and we are certain that they will quickly settle and be happy.

Our team is very experienced in helping children to settle and will call you if your child continues to be upset.

Please ensure you say goodbye to your child.

School Hours

The school day begins at **8:45am**. Children will come into the playground to line up with their teacher.

Lunch starts at **11:45am** and the afternoon session begins at **12:30pm**.

The school day ends at **3:15pm**.

Collecting Your Child

The playground gates will be opened at **8:45am** and **3:10pm**. Please wait outside the gates until a member of staff opens them.

At the end of the school day, children in Reception will wait in their classroom until their name is called.

Attendance and Punctuality

It is important that your child attends **on time every day** in order to reach their full potential and to get the best possible opportunities from our nursery.

If your child is unwell, it is important that you ring in and report your child's absence on the first day. If your child becomes ill during the session, we will contact you. **Please ensure your contact details are kept up-to-date with the school office.**

Working in Partnership

Workshops

We run a series of workshops throughout the year that parents may wish to attend.

Parents' Evenings

We hold two parent's evenings a year for you to meet with your child's teacher and review their learning journey.

End of Year Report