

# Oxbridge Lane Primary School



## Welcome to Year 1

## Welcome to Year 1!

I am Miss Amerigo and I am the headteacher at Oxbridge Lane Primary School.

Welcome to your new year group! I hope you have a fantastic time during transition week and that you enjoy meeting your new class and teachers. There is so much for you to learn, and I am sure you are all excited to get started.

Have a wonderful summer and I am looking forward to seeing you back at school in September.

## Classrooms and Areas



### Look at our fantastic classrooms!

We try and make it as exciting as possible giving you lots of time to explore our topics in the environment. Our classroom is filled with the magic and wonder of learning. Every day is a day filled with endless promise and another key to unlock your potential and imagination. Learning in Year 1 is all about you! Together we are one team and all of you are the biggest part. Our classroom will grow around our learning which means we always need your help!







In school, we follow the Jolly Phonics scheme. To learn more about the scheme, please use this web link:

<https://www.jollylearning.co.uk/>

## Year 1 Phonics Screening

The Phonics Screening Check takes place in all Year 1 classes in June. It checks if all children have reached the appropriate standard in Phonics.

A familiar teacher works one to one with the child to read a list of 40 real and pseudo (not real) words. Pictures of imaginary creatures are used next to the pseudo words to help the children realise that they are not real words. There will be more information about this sent out in the Spring Term.

Section 1	Section 2
sut 	shop
yad 	yell
dop 	peel
uct 	check

## Useful Websites

Phonics games: <https://www.phonicsplay.co.uk/>

Practise Phonics Screening materials:

<https://www.sats-papers.co.uk/phonics-screening-test/>



## Mathematics

### Power Maths

In school we use Power Maths. This programme is designed to spark curiosity and excitement, nurture confidence in maths and embed a growth mind-set approach to maths. It focuses on helping all children to build a deep understanding of mathematical concepts.



### Mastering Number

In Year 1, we use Mastering Number to support pupils in gaining a firm understanding of number and how to apply this knowledge to different aspects of maths. It links very well with Numberblocks.

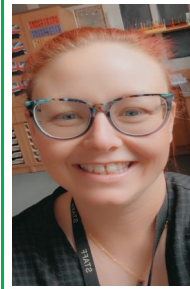
## Learning to Read

In Year 1, reading is taught through daily English and Phonics lessons, as well as reading lessons. Teachers in Year 1 give a high priority to the teaching of reading and will continue to use the Jolly Phonics reading programme that was used in Early Years. This offers children the opportunity to build on the work they have done in Nursery and Reception and apply them in their reading and writing.



**It is important that you read and share a variety of texts with your child, including fiction and non-fiction books, magazines, recipes, comics, shopping lists and much more.**

## Staff in Year 1



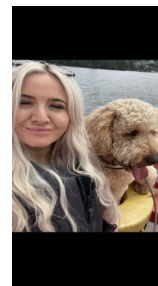
Mrs Franklin

Hi, I'm Mrs Franklin and I will be the Year 1 teacher next year. I am really looking forward to meeting you all and learning some exciting new things in Year 1. I love reading and can't wait to share some of my favourite stories with you all. We are going to have an amazing year and I can't wait to get started.



Mrs Pickering

Hi everyone! My name is Mrs Pickering and I will be working with you all in Year 1! I am super excited to still be on this journey with you all and can't wait to see how much you thrive on this new adventure! When I'm at home, I enjoy colouring and cooking with my family and going on long walks with my sausage dog Eddie and my cat Clyde. See you all soon! :)



Mrs Hamer

Hello everyone, my name is Mrs Hamer. I am looking forward to working with you next year, I enjoy singing, and exploring outside. When I am not at school I like going on holidays with my family. I also love dogs – you will hear all about my dog, he is called Teddy and is a Golden Doodle, see you all soon.

## School Uniform

Our uniform is important to us as it shows we are proud to be part of the Oxbridge family.

### Our uniform is:

A green sweatshirt / cardigan  
White polo shirt  
Black or grey trousers / skirt  
Sensible shoes  
Book bag



### For summer

Green gingham dresses  
Black or grey shorts

**For safety reasons please keep all jewellery at home.**

## PE Uniform

Children take part in 2 hours of PE each week. They should come to school wearing their PE clothes and will remain in them throughout the day.

PE Days in Year 1 are: **Tuesday and Wednesday**

### Our PE kit is:

White t-shirt  
Black shorts / jogging bottoms / leggings  
Black jumper / hoody or school jumper.  
Plimsolls or trainers



With 60 five year olds in one space, you will understand our reasons for asking you to **PLEASE LABEL** all clothing clearly. Uniform with our logo embroidered on can be ordered from **Elizabeth's Embroidery** if you wish to do so.

## Year 1 Curriculum

The main difference between Reception and Year 1 is the change of curriculum. For two years or more, your child has been following Early Years Foundation Stage Curriculum and being assessed against the 7 Areas of Learning.

In Year 1, your child will progress from these 7 Areas of Learning, to the National Curriculum subjects for Key Stage 1. The classroom continues to be designed in a continuous provision set up to promote independence and learning through play.

To find more information about the curriculum in Year 1, please visit the National Curriculum website at:

<https://www.gov.uk/national-curriculum/key-stage-1-and-2>

## Topics Covered

Throughout Year 1, children will learn these foundation subjects:

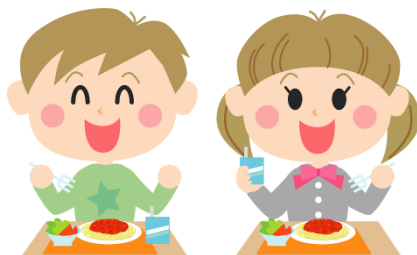
- Science
- History
- Geography
- Art and Design Technology (DT)
- Religious Education (RE)
- Physical Education (PE)
- Personal, Social, Health and Economic (PSHE)
- Relationships and sex education (RSE) - age appropriate
- Music

The overview for the foundation subjects curriculum can be found on our school website.



## Lunchtime

Lunchtime is a very sociable time. At Oxbridge Lane, children sit in the dining hall to eat lunch alongside their friends. We encourage the children to try all the food. The menu will be made available on our website.

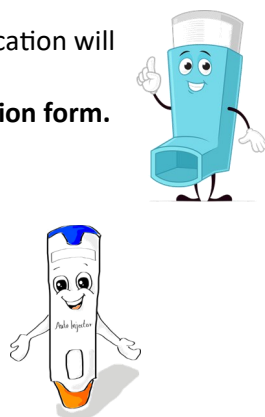


Food menus cater for vegetarians, medical dietary needs and allergies. We are also very happy to work with you and your child to make sure that they are able to eat the food on offer. We know that some children can be fussy, but we are committed to working with you to help your child enjoy a wider range of foods. The children drink water with their food.

## Medicines

Asthma inhalers, epi-pens and other prescribed medication will be administered in school where necessary.

**Please ask the School Office for the relevant permission form.**



## Getting your child ready for Year 1

Children in Reception will have had lots of discussions with their teachers about moving up into Year 1.

You could support your child to be ready for Year 1 by:

### Maths

Look at shapes and patterns in the environment.

Practise counting, reading and writing numbers to 100.

### English

Read and share a variety of books. Retell the main points of the story.

Practising phonics daily and learning to read familiar words.

## School Hours

The school day begins at **8:45am**. Children will come into the playground to line up with their teacher.

Lunch starts at **11:45am** and the afternoon session begins at **12:30pm**.

The school day ends at **3:00pm**.

## Collecting Your Child

The playground gates will be opened at 8:40am and 3:00pm. Please wait outside the gates until a member of staff opens them.

At the end of the school day, children in Year 1 will line up under the canopy and are asked not to go to their adult until a member of staff calls their name.

**All children must be collected by a responsible adult who is known to the staff.**



## Attendance and Punctuality

It is important that your child attends **on time every day** in order to reach their full potential and to get the best possible opportunities from our school.

If your child is unwell, it is important that you ring in and report your child's absence on the first day. If your child becomes ill during the school day, we will contact you. **Please ensure your contact details are kept up-to-date with the school office.**

## School Rules

At Oxbridge Lane Primary School we have 3 school rules that are followed throughout school.

They are:

**Be ready**  
**Be respectful**  
**Be safe**

These simple rules are easy to follow and we encourage pupils to reflect on their own behaviour within school.

## Working in Partnership

Within Year 1 we offer opportunities for parents/carers to attend; a Welcome to Year 1 meeting, stay read, stay and play sessions, coffee afternoons and parents evening.

## Keeping in Touch with You

### SchoolComms

All letters and information that you receive from school are sent to you electronically via SchoolComms. We do need you to provide us with your email address so that we can use this system. If this is not a suitable method, we can send paper copies.

**PLEASE make sure that you have signed and returned the SchoolComms permission form.**

**Website:** [www.oxbridgelane.org.uk](http://www.oxbridgelane.org.uk)

This is a very useful place to look for information. In emergencies, such as snowy weather, which may cause us to close the school, the website will keep you up to date. All letters sent by SchoolComms are also available to view on the website.

### Newsletter

These are published regularly. This is how we keep you up to date on what is happening in school.

### Oxbridge Lane Parent Teacher Association (PTA)

We are hoping to draw together friends of Oxbridge past and present. If you have ideas that could make this association grow, please get in touch and join in.

**School telephone number:** 01642 607421

**School email address:** [admin@oxbridgelane.org.uk](mailto:admin@oxbridgelane.org.uk)

